



# BRITISH TESOL CONTINUING PROFESSIONAL DEVELOPMENT FOR ENGLISH LANGUAGE TEACHERS

## Birmingham College

### Duration & Delivery

The British TESOL CPD programme is offered as a bespoke programme that meets your organisations specific requirements, in terms of duration, fees, course components, etc. However, to ensure quality, we insist on a minimum duration of 30 contact hours.

This programme offers flexibility in delivery as it can either be delivered in the host country or organised in the UK. Based on the hours, days, delivery option & selection of course contents, a personalised quote / fee per participant will be discussed.

### Programme Schedule & Fees

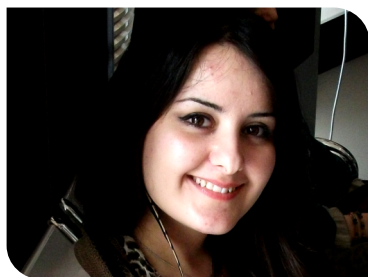
The fees for the British TESOL CPD programme vary. Please visit the College's website [www.bcol.co.uk](http://www.bcol.co.uk) or email [bc@bcol.co.uk](mailto:bc@bcol.co.uk) or contact our local partner for dates and fees.

### Entry Requirements

This programme is designed specifically for individuals to improve their English Language subject teaching skills. It is advised that participants should be proficient in English Language and an internal assessment might be suggested as good practice when selecting participants for the programme.

### Sample Timetable

Day	Topic / Module	Topic / Module	Topic / Module	Topic / Module
Day 1	The Learner Profile	Methods of Assessment & Testing	Methods of Assessment & Testing	Effective Use of Aids & Resources
Day 2	Lesson Plans	Classroom Management & Organisation	Study of English & Language Awareness	Teaching the Four Skills
Day 3	Language Acquisition	Teaching Skills	Teaching Techniques, Methods & Approaches	Developing & Improving Teaching Materials
Day 4	Presenter's Choice	Course Review	Group Presentation Preparation	Group Presentation
Day 5	Group Presentations	Group Presentations	Group Presentations	Certificate Presentation

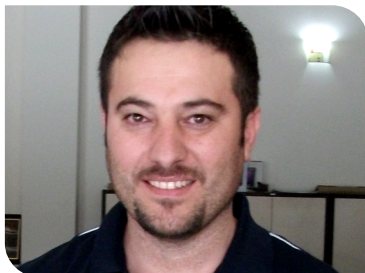


“I'm really thankful to the teachers for letting me know and recognize new teaching techniques.”

**Rojan Ameen Younis**  
Bijara Typical High School

“Everything was perfect.”

**Azad Jameel Dheyab**  
Haval Typical School



### Local Representative

# BRITISH TESOL CONTINUING PROFESSIONAL DEVELOPMENT FOR ENGLISH LANGUAGE TEACHERS

## Birmingham College



### Accreditation

The British TESOL (Teaching English to Speakers of Other Languages) CPD (Continuing Professional Development) programme is accredited by **Birmingham College, UK**.

Birmingham College is a leading teacher education provider in the UK and overseas, with **British Council** accreditation for the teaching of English in the UK and it holds **English UK membership**. The College provides its expertise to local and international schools, centres, colleges and universities for learning and teaching development.

Birmingham College is an evolving and innovative college with a growing reputation for excellence in education. The College provides a caring and supportive environment, enriched by a unique blend of academic expertise, forward-thinking initiatives and a range of ongoing research projects.

### CONTACT

## Birmingham College

BMI Building, 9 Margaret Street,  
Birmingham B3 3BS UK.

Tel: +44 (0) 121 212 0888

Fax: +44 (0) 121 212 0666

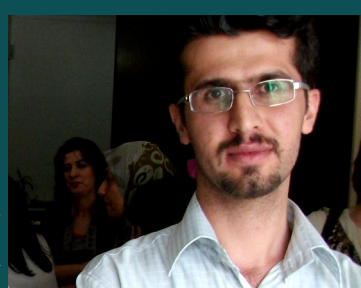
E-mail: [bc@bcol.co.uk](mailto:bc@bcol.co.uk) | [www.bcol.co.uk](http://www.bcol.co.uk)





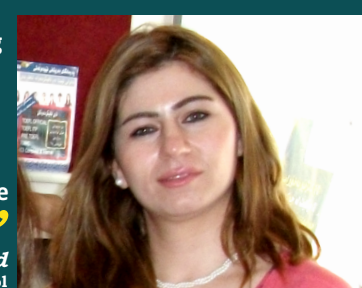
**“I hope to be involved in further programmes provided by Birmingham College.”**  
*Mahnaz Youns Abdul Qader*  
Gesha Basic School

**“The programme changed my way of thinking and perspective of teaching.”**  
*Rebaz Salahaddin Abdullah*  
Twimalik



**“I feel so pleased that I can improve my teaching and be more helpful to my students.”**  
*Samira Ali*  
Bekhal Ideal School

**“At the end of the programme, I now feel like I can teach my students like a model teacher.”**  
*Gullan Hamasalih Ahmed*  
Rangin Typical School



### Designed & Developed By British & International

**Experts** the British TESOL CPD programme is designed and developed by experts and professionals who have been working in the field of teacher education and training for many years. The team includes professors from top ranked universities in the UK and abroad, higher education on lecturers and individual academics and researchers.

### Aims

- ▶ To provide an insight into approaches in ELT in the UK
- ▶ To develop individuals English language skills and knowledge
- ▶ To manage the challenges of teaching and achieve goals set out by schools and education institutions
- ▶ To promote the concept of self-reflection in professional practice
- ▶ To stimulate motivation for Continuing Professional Development
- ▶ To emphasise student-centred learning, personalisation and the value of promoting Learner Autonomy
- ▶ To develop skills to help a learner's ability to work independently and effectively improve
- ▶ To demonstrate recent developments and practice in UK education, plus introduce underpinning theories to support them. e.g. CLIL



### Importance of TESOL CPD Programme

The CPD programme is an important part of belonging to an organisation and takes place across all stages of a teacher's career. It helps teachers build professional relationships, develop personal objectives and to share and learn from each other. It also helps managers and heads get the best out of their teachers.

Keith Harding (in Modern English Teacher Volume 18 Number 3, July 2009) suggests that the characteristics of Continuing Professional Development (CPD) are that it is:

- ▶ Continuous - professionals should always be looking for ways to deal with new challenges and improve performance
- ▶ The responsibility of the individual teacher - who identifies his or her own needs and how to meet those needs
- ▶ Evaluative rather than descriptive - so that the teacher understands the impact of the activity
- ▶ An essential component of professional life, not an extra.

### Programme Structure

1. Language Acquisition
2. The Study of English & Language Awareness
3. Teaching the Four Language Skills
4. Teaching Techniques, Methods and Approaches
5. Methods of Assessment & Testing
6. Lesson Planning
7. Classroom Management & Class Organisation
8. Effective Use of Aids and Resources
9. The Learner Profile
10. Teaching Skills
11. Developing and Improving Teaching Materials



### Programme Leader

Mr. Salguero has been involved with international students and teachers since 1979 on a wide range of courses. Mr Salguero has experience of most aspects of ELT, EAP and ESOL and has taught on IELTS programmes since its introduction in 1989. He has over 16 years of IELTS examiner experience. His qualifications include an MA in ELT for Specific Purposes (Distinction) from the University of Warwick, LLUK Professional Recognition (ESOL specialist) and Trinity College (London) TESOL Licentiate Diploma. He has worked with groups of teachers from China, Iraq, Russia, Hungary, Turkey, Thailand and Egypt.

### Teacher Trainers

The College has an extensive team of experienced trainers who all have experience of delivering the programme overseas. All trainers are native speakers and are highly qualified. The teacher trainers are individuals with enthusiasm for their subject areas in terms of updating their specialist knowledge and imparting their experience and expertise to others.

### Teaching Methods

The Programme is delivered through workshops, seminars, discussions, assignments, oral presentations, classroom activities and teaching assessments. The sessions are designed to be thought-provoking, interactive and enjoyable.

### Award & Certification

Upon successful completion of the programme all participants will be awarded the British TESOL CPD in English Language Teaching Certificate and an individual transcript.

Participants will be awarded either a Pass, Merit or Distinction based on their academic assessment performance.

The certificate and transcript copy is available for online verification on the Birmingham College website through this mentioned link:

**[www.bcol.co.uk/online\\_verification](http://www.bcol.co.uk/online_verification)**

### Assessment

The British TESOL CPD programme is assessed by means of participant attendance, participation, individual/group presentation, learner journal and written assignments. The breakdown of the assessment is presented below. Note the obtained marks are mentioned on the transcript.

Assessment Methods	Mark Allocation
Attendance	5
Participation	15
Presentation	30
Learner Journal	25
Written Assignment	25
<b>Total</b>	<b>100</b>